

# Basins, Reservoirs, Resources



## Aims and issues addressed

Improve understanding of fluid deformation and circulation in sedimentary basins. Enhance predictivity for reservoirs at various levels (oil, geothermal, etc.).

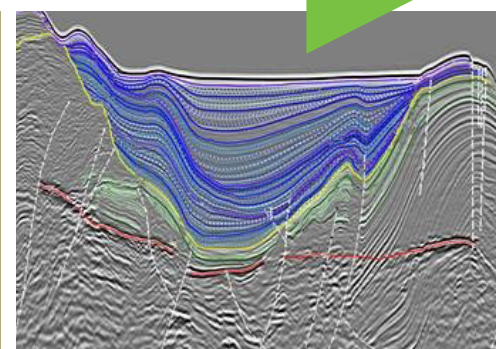
Clarify the role of faults and joints in fluid circulation and understand the link between deformation schedules and circulation phases of fluids.

## Missions

- Characterization of fracturing in Death Valley (USA)
- Orogenic wedges in foreland (Spanish Pyrenees) and forearc (Hikurangi, New Zealand) basins

## Expertise

- Petrology of minerals and organic matter
- Sedimentology (facies, processes)
- Low-degree metamorphism (clays, mineralization)
- Stratigraphy (basins, margins)
- Structural geology (fracturing, circulation)
- Paleontology
- Modeling of fluid circulation
- Seismic interpretation



# Technical resources

**Geoscience research facility (UniLaSalle):**  
XRD, SEM and EDS detector, absorption spectroscopy, motorized stage microscope, thin section laboratory, Geolab

**Analytical facility (UPJV):**  
TEM, microscope with atom detection (NTEGRA)

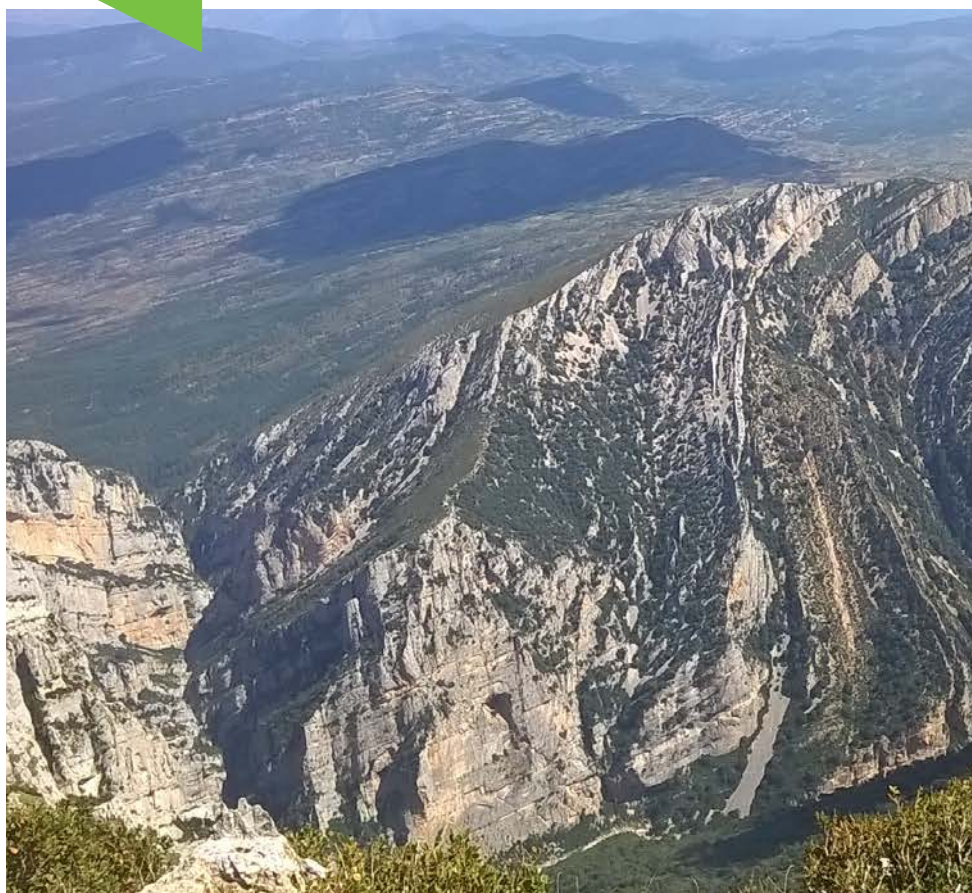
# Partners

## Academic partners:

UNIVERSITY OF CERGY PONTOISE • SORBONNE UNIVERSITY • LILLE 1 UNIVERSITY (LOG) • UNIVERSITY OF GENEVA • ROYAL BELGIAN INSTITUTE OF NATURAL SCIENCES • UNIVERSITY OF ZAGREB • DARMSTADT UNIVERSITY OF TECHNOLOGY • UNIVERSITY OF GÖTTINGEN • GFZ POSTDAM • UNIVERSITY OF TEXAS AT EL PASO • UNIVERSITY OF CANTERBURY • DESERT RESEARCH INSTITUTE • GOVERNMENT OF WESTERN AUSTRALIA DEPARTMENT OF MINES AND PETROLEUM • GNS (NEW ZEALAND) • UNIVERSITY OF MONTPELLIER

## Industrial partners:

TOTAL • LUNDIN • REPSOL • SCHLUMBERGER • VERMILLON • ES GÉOTHERMIE • ENOGIA • FEBUS OPTICS • GEOTHERMAL ENGINEERING GMBH • GIMS LAB • ICI



## The unit

**8** Associate Professors

**3** Lecturers

**1** Technicien

**1** Post-doctoral fellow

**3** Doctoral students

**5** Associate professors

### Manager / Contact

—  
👤 **Sébastien POTEL**  
@ sebastien.potel@unilasalle.fr

### Link to the site:

<https://www.unilasalle.fr/recherche/recherche-service-de-nos-ambitions/b2r/>



See us  
on YouTube

**UniLaSalle**  
Terre & Sciences

[www.unilasalle.fr](http://www.unilasalle.fr)

Follow us!

